



Enterprise Introduction

Reliable and Trustworthy / Superior Product Quality

Contact person:

Cell phone number:



Company Profile

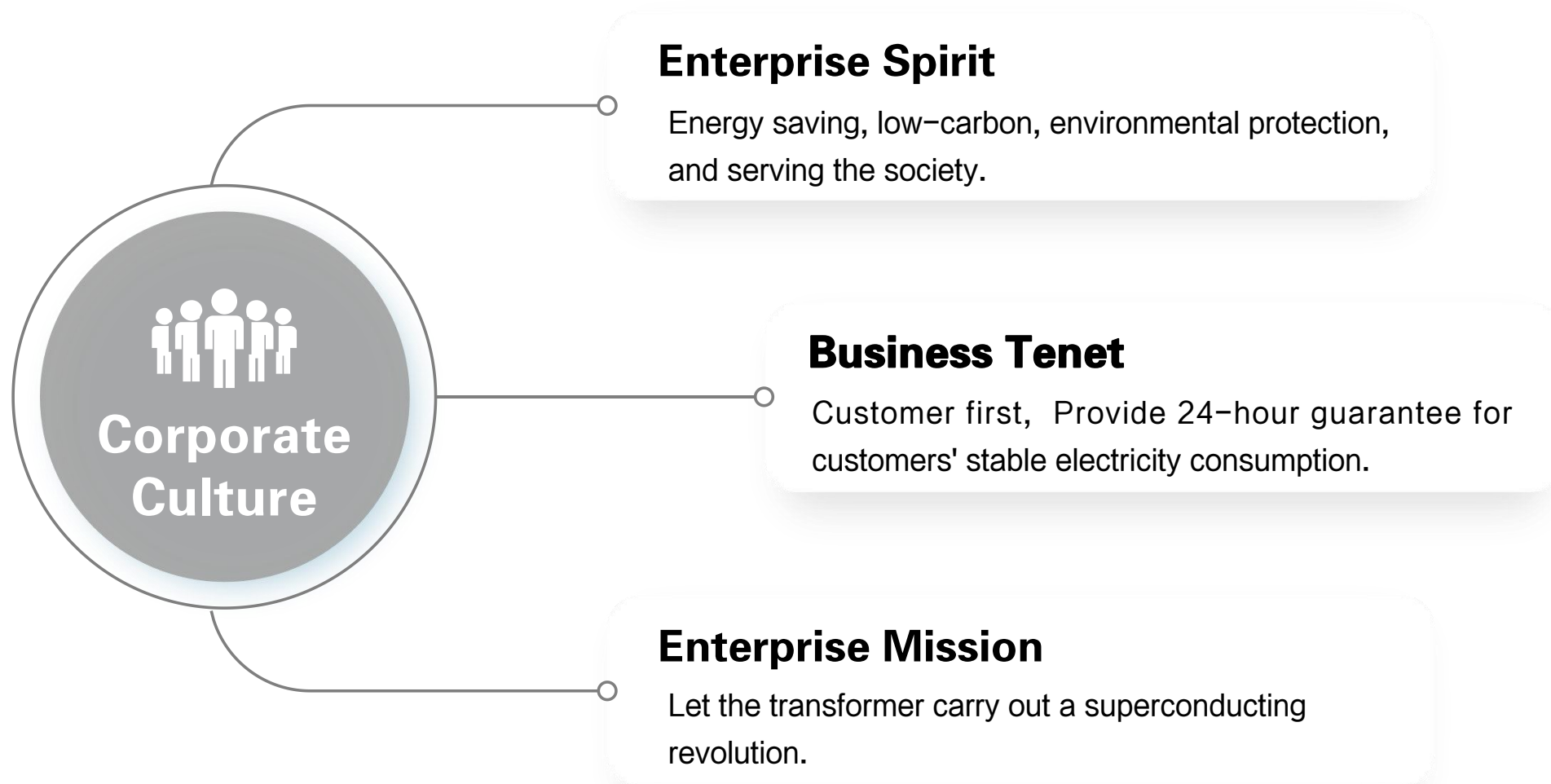
ZBB[®]



- ◆ Year of establishment: 1985
- ◆ Factory area: 36,227m²
- ◆ Location of company: Shanghai Jinshan, Anhui Xuancheng, Zhejiang Wenzhou
- ◆ Current number of employees: 445
Senior engineers and technical personnel: 45
Managerial staff: 52
- ◆ Business Distribution: Provide services for the construction of electric power departments and all kinds of engineering projects in all provinces, municipalities and autonomous regions of China.
- ◆ Main business: Special power transformers, pad-mounted transformers, new energy substations and other products of 110kV and below.

Export countries

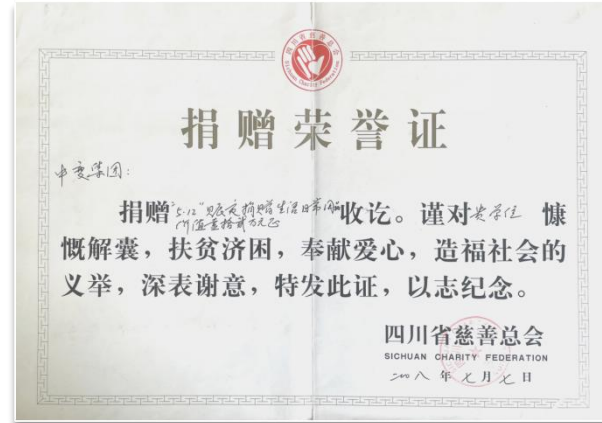




Social Responsibility



(Honorary Certificate of Shanghai Red Cross Society)



(Sichuan Charity Federation Donation Honorary Certificate)



(Hope Project Donation Certificate)



(Shanghai Elderly Foundation Donation Certificate)

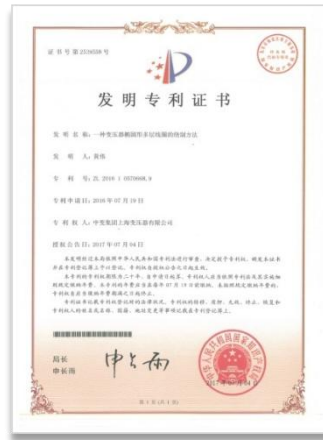


(Thank you letter from Shanghai Federation of Industry and Commerce)

Patent Certificates (partial display)



From 2005 to 2023, the company has obtained 21+ invention patents, 55+ utility model patents, 11 design patents and international patents.



Certificates of Honor (partial display)

ZBB®

- ✓ High-Tech Enterprise Certificate (August 2012)
- ✓ Shanghai Key New Product Certificate
- ✓ Shanghai Patent Training Enterprise Certificate
- ✓ National Key New Product Certificate
- ✓ Certificate of Jinshan Science and Technological Progress Award
- ✓ Certificate of Shanghai High-Tech Achievement Transformation Project
- ✓ Certificate of Shanghai Credible Enterprise
- ✓ Certificate of Green Manufacturing Enterprise
- ✓ Green Environmental Protection Promotion Enterprise Certificate
- ✓ China Energy Conservation and Environmental-Friendly Product Certificate
- ✓ Certificate of Combating the COVID-19 Epidemic
- ✓ Quality Credit Rating Certificate
- ✓ Advanced Group Certificate



Shanghai Famous Brand



Shanghai Famous Trademark



Low-carbon China Contributing Enterprise

Key projects performance (partial display)

ZBB[®]



国家电网公司
STATE GRID
CORPORATION OF CHINA

State Grid Shanghai Municipal Electric Power Company

State Grid Gansu Electric Power Company

State Grid Hunan Electric Power Company Limited

State Grid Hebei Electric Power Company Limited

State Grid East Inner Mongolia Electric Power Company

Limited

State Grid Heilongjiang Electric Power Company Limited



Lens Technology Co.,



**China Aluminum International
Engineering Co., Ltd.**



Shijiazhuang Yiling Pharmaceutical Co., Ltd.



Shandong Longyue Rubber Co., Ltd.



Key projects performance (partial display)



Qingdao Haiwan Chemical Co., Ltd.



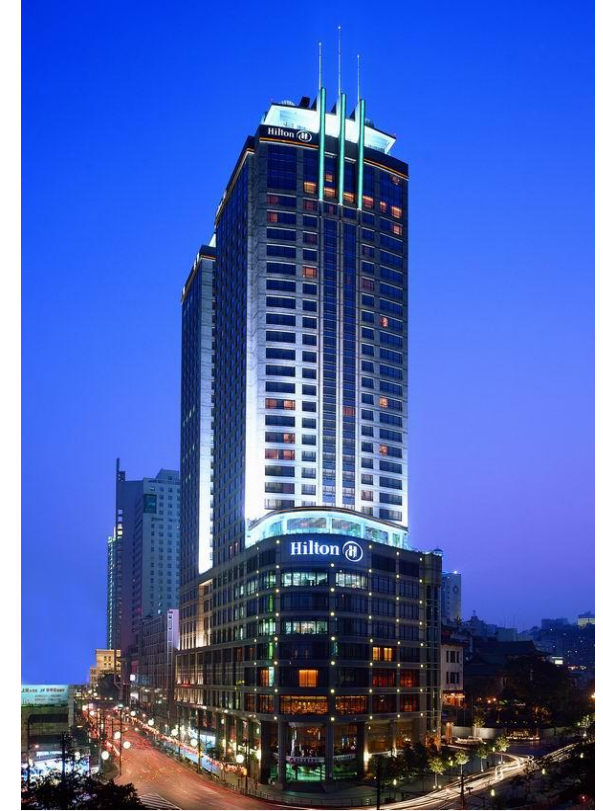
Shanghai Hongqiao Transportation Hub



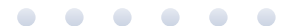
Shanghai Creative Superconductor Technologies Co., Ltd.



Shanghai EXPO Cultural Park



Hilton Shijiazhuang



Fortune Global 500 and China Top 500 (partial display)

ZBB®



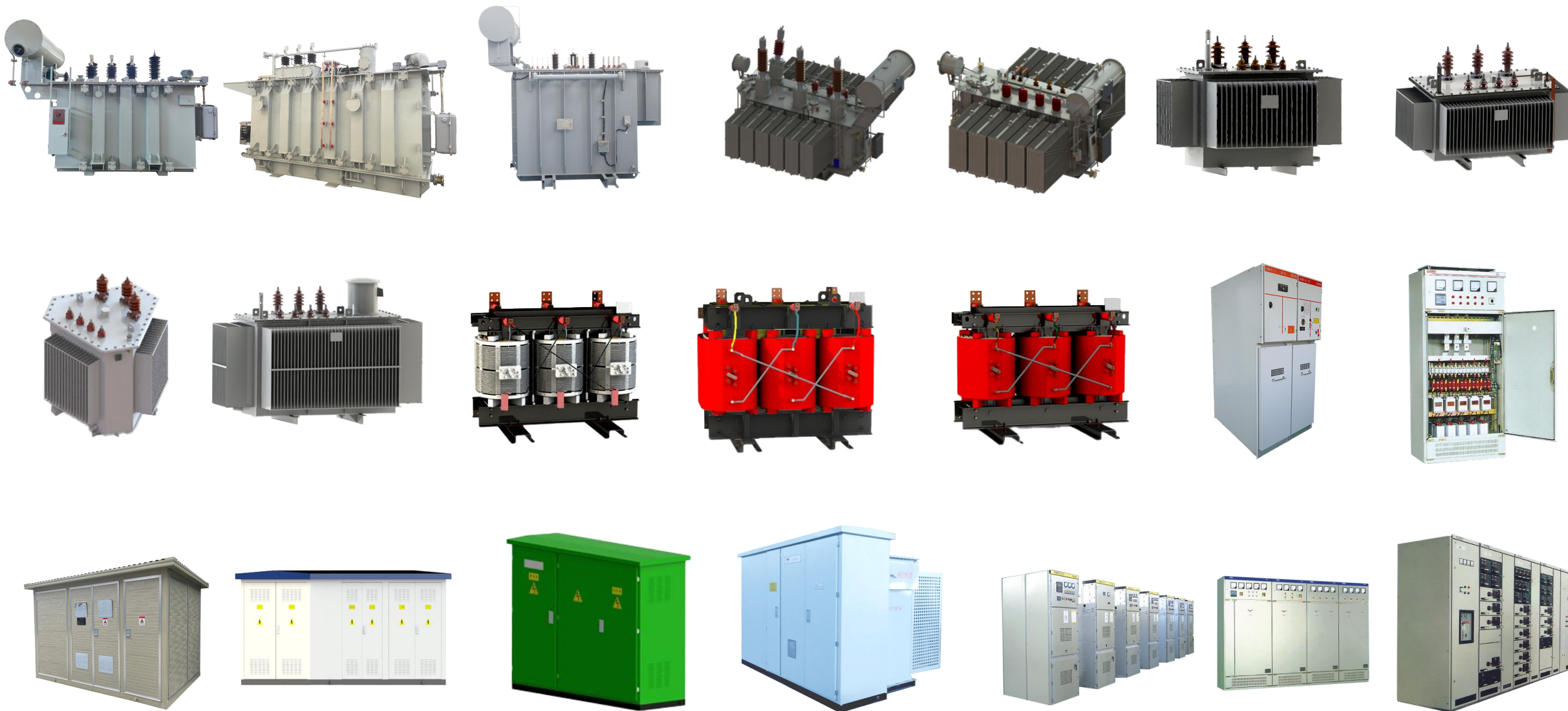
Fortune Global 500 and China Top 500 (partial display)

ZBB[®]



Product Introduction

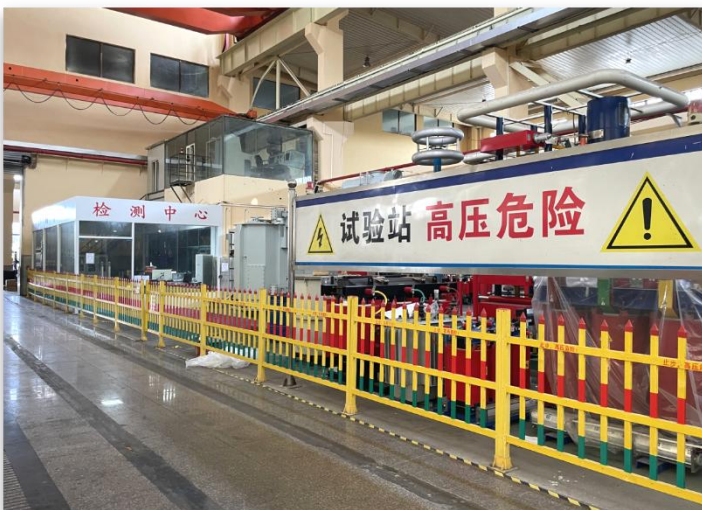
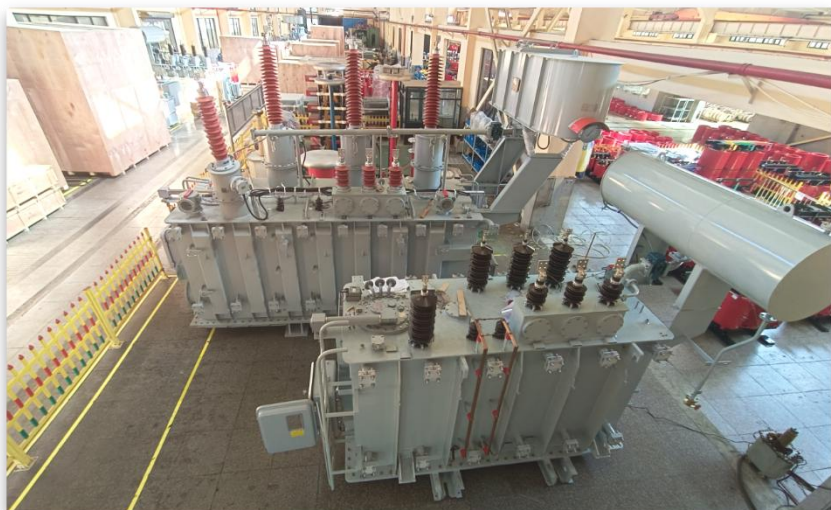
ZBB[®]



Production Workshop I

(Jinshan, Shanghai)

ZBB[®]



Production Workshop II

(Xuancheng, Anhui)

ZBB[®]



Production Workshop III

(Xuancheng, Anhui)

ZBB[®]



Finished Product Sites

(Distribution transformer series)

ZBB[®]



SCB14-2500 Dry-type transformers



SCBH19-800 Amorphous alloy transformers



SCB18 Dry-type transformers



S20-800 Oil-immersed transformers



D13-3150 Power transformer



S22-3150 Oil-immersed transformers

Finished Product Sites

(Main Transformer Series)

ZBB[®]



ZHSFPT-12750/35 Rectifier transformer



SFZ22-31500/110 Oil-immersed transformer



SCZ14-25000/35 Dry-type transformer

Customer project site

ZBB[®]



Customer Project Site

ZBB[®]



Customer Project Site

ZBB[®]



Customer Project Site

ZBB[®]



ZBB[®]



CHINA ZBB GROUP SHANGHAI TRANSFORMER CO.,LTD.

Address: No.4185, Tingwei Highway, Jinshan Hi-Tech Zone, Shanghai, China

E-mail: ZBBCHINA@vip.163.com